

Forest Treasures Map

To find the treasures in the magic forest, discover why Hawai'i has so many unique native plants and animals. Place your answers to the clues in the boxes. Then write a paragraph describing the reasons why Hawai'i has many unique species using the clues as a guide. Use the terms native, indigenous and endemic in your paragraph.

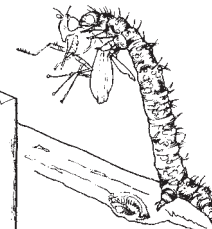
Answer to Clue #1 Here

Answer to Clue #2 Here

Answer to Clue #3 Here

Answer to Clue #4 Here

Many Unique
Native Species



Clue #1

If you are far away
from everything,
you are ? .

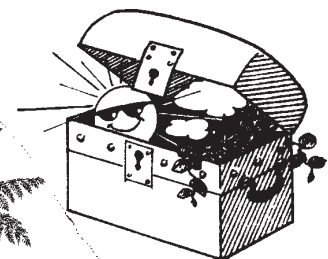


Clue #2

Flightless, stinkless
or thornless are we.
On isolated islands
this came to be.
What was missing here?
Do you see?



Start Here



Clue #3

We reach for the sky,
but we do not fly.
On this island (Hawai'i Island)
we number five .
What are we?



Clue #4

Without mountains we'd be few.
Differences in temperature
and rainfall too,
create conditions
each of us need.
Who are we?

