

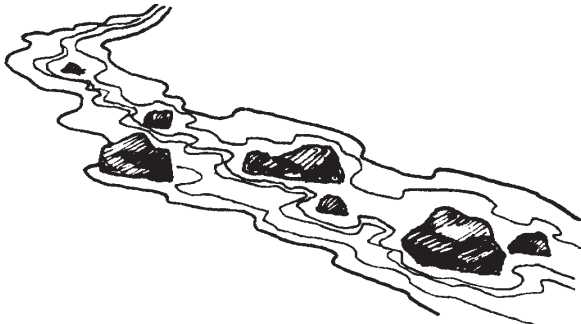
Wai Card



Wai Card



Wai Card



Wai Card



Wai Card



Wai Card



1

Who was Hāloa and why is he important in Hawaiian culture?

CHANCE

4

What does it mean to say that “the water that flows through the land is like blood that flows through our bodies”?

2

Why are the areas where streams flow into the sea good places to fish?

5

Name three ways that Hawaiians depended on water from streams.

CHANCE

3

How could a farmer attain wealth or *waiwai* in old Hawai‘i?

6

What is the major difference between the Hawaiian ‘*auwai* system and the modern system of using stream water for crops?

7

Punalu‘u means “diving spring.” How did Hawaiians obtain water from these springs?

CHANCE

10

How is *kalo* planted and what does it need to grow?

8

How is streamlife affected when large amounts of water are removed from a stream?

CHANCE

11

How is *kalo* harvested?

CHANCE

9

How are *kalo* farmers affected by the water needs of large modern farms today?

CHANCE

12

Name three different areas of an *ahupua‘a* and describe a resource to be found in each area.

13

How is *poi* made?

CHANCE

16

Where did people living in dry areas obtain their fresh water?

14

Name one effect of having more silt or soil added to streams.

17

Why do native stream animals need to have streams that flow freely to the sea?

CHANCE

15

Why did Hawaiians pound *kalo* to make *poi*?

CHANCE

18

What is one reason that so many *kalo* farmers have stopped farming?

19

Name one thing people can do to take care of streams today.

CHANCE

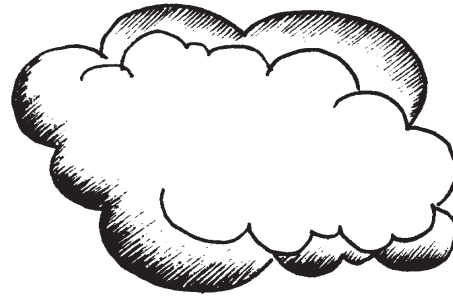
20

How does the increase of silt in the stream affect the reef in the ocean?

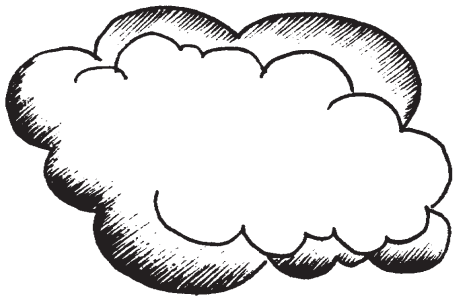
Chance



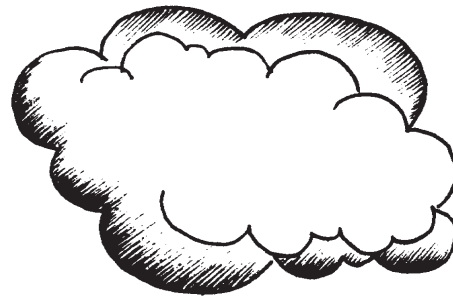
Chance



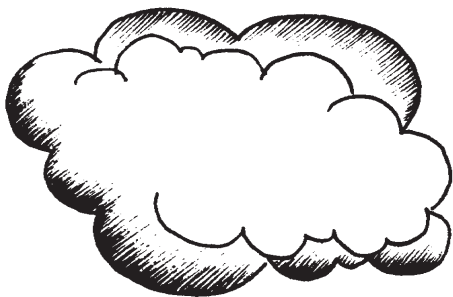
Chance



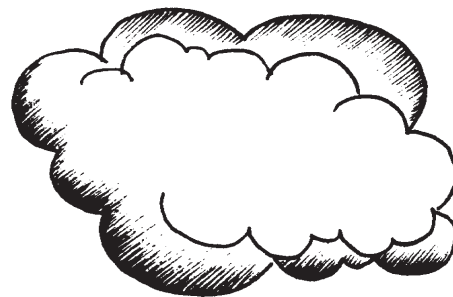
Chance



Chance



Chance



Wai Ola: The Water of Life

Chance Cards

A drought causes the water level to drop in the stream. Return one water drop to the *'auwai*.

A landslide fills much of the stream with soil. Return one water drop to the *'auwai*.

Rainfall adds more water to your stream. Take one water drop from the *'auwai*.

You work very hard to help repair the *'auwai* and the *konohiki* gives you more water. Take one water drop from the *'auwai*.

A greedy farmer upstream takes more than his share of water. Return one water drop to the *'auwai*.

Surf is up and your *'ohana* decides to surf instead of take care of the *'auwai*. Return one water drop to the *'auwai*.

Wai Ola: The Water of Life

Chance Cards

A long steady rain adds more water to the stream. Take one water drop from the *'auwai*.

You are farming upstream and take more water than the *konohiki* has allowed for your *'ohana*. Take one water drop from the *'ohana* “downstream” on your left.

The men in the family become ill and cannot take care of the *'auwai*. Return two water drops to the *'auwai* and ask other *'ohana* to share some water with you.

You help carry rocks to repair the *'auwai* and the *konohiki* rewards you with more water. Take a water drop from the *'auwai*.